

PCB REWORK & REPAIR



Providing a flexible board reworking service for component removal and replacement plus special pad and track repair.

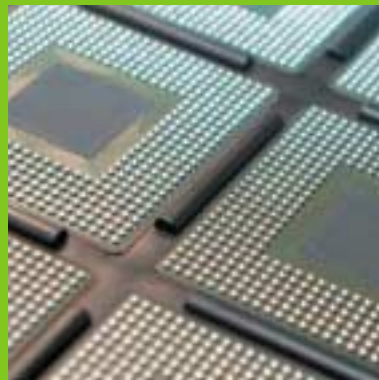
Tru-Form has over the past number of years invested in equipment capable of providing a premier board reworking service for use by the electronics manufacturing community.

Equipment capability includes...

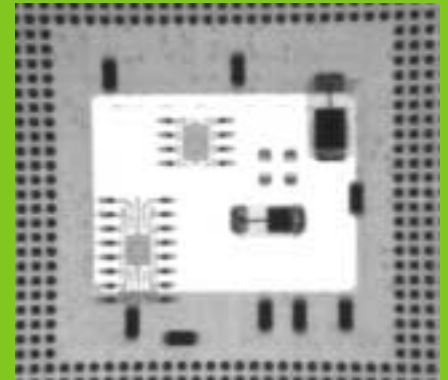
- Fully automated BGA and QFP removal and replacement.
- X-ray inspection of components including soft copy pictures.
- All repairs are completed in line with IPC workmanship standards.
- Component underfill rework specialist.
- Ionic Contamination Testing available ensuring outgoing PCB cleanliness to DEF and MOD standards.



Conceptronic in use



BGA Re-balling



X-ray inspection



tru-form

attrition management
& component enhancement

12-15 A-Tech Court Lancasterfields Crewe Cheshire CW1 6FF
T: 0044 (0)1270 252566 F: 0044 (0)1270 252596
E: sales@tru-form.co.uk www.tru-form.co.uk



2334/00

Tape and Reeling



SERVICE LIST INCLUDES...

- BGA removal and replacement.
- BGA re-balling as part of repair.
- SMT Component removal and replacement.
- Pad and Track repair.
- Solder on Gold repair.
- Ionic Testing.
- Component Harvesting. (Selective component removal and conditioning)
- Scrap PCB disposal and Precious Metal Recovery.
- Underfill components removed and PCB Salvaged.
- X-ray inspection available.

Technical detail

The company policy is to automate processes wherever possible, this strategy enables a high level of consistency and repeatability on all processes.

Environment

Quality System operating within ISO 9001:2000.

Full ESD environment CEI IEC 61340-5-1
Humidity and Temperature monitoring.

PCB Rework and Repair

Focused Infrared.

Computer based vision system.

Closed loop thermal profiling.

Dry Packing

ESD Bag.

Humidity indicator card 4 Spot.

Desiccant included in all MSL dry packing.

Customised labelling available.

Baking Considerations

Components are baked at 125 deg C for 24 hours.

Alternative is to bake at 40°C with less than 5% relative humidity for 192 hours.

Labelling

Both polyester and Kapton labelling is an option.

Quality

ISO Certified.

Full ESD Protected Environment.

Fully Traceable documentation.

Integrated production control system.



Component Harvesting



Dry Packing



QFP Lead Alignment